

Oxford & Piquet



//

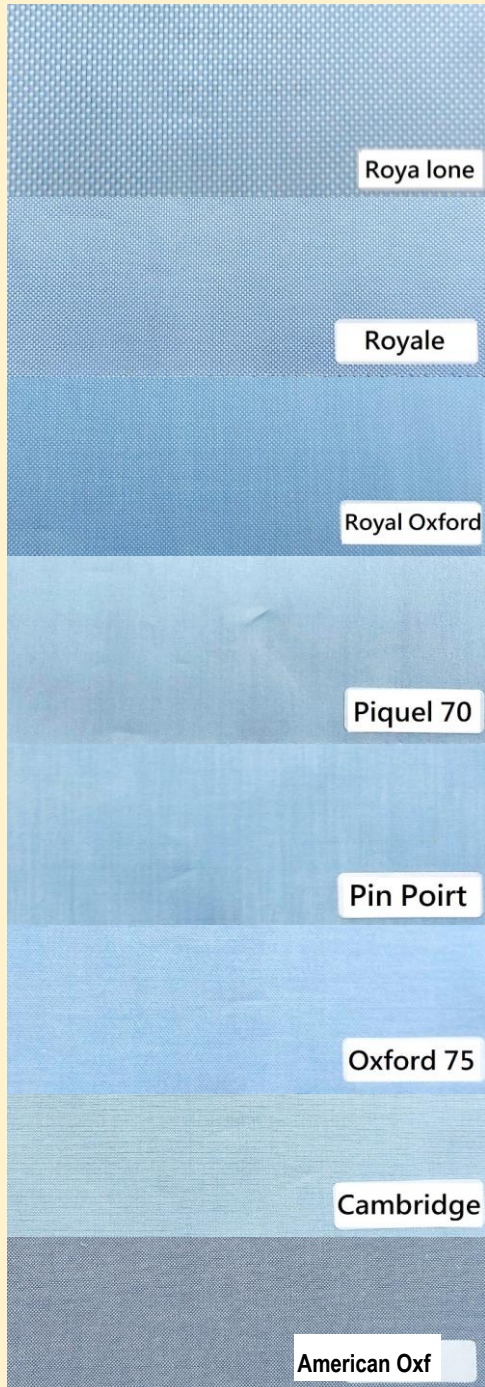
AT THE DROP OF A HAT

//

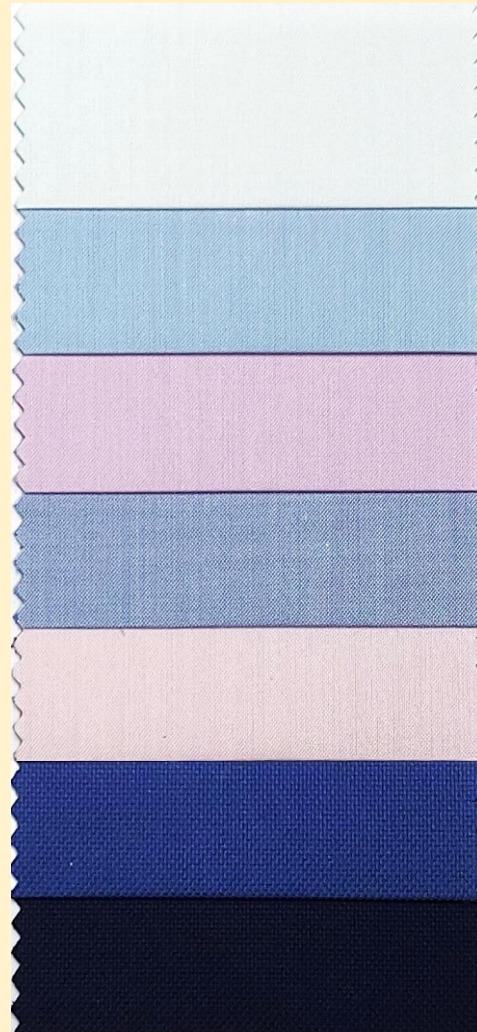
Without any hesitation; instantly.
Fare qualcosa senza alcuna esitazione,
immediatamente.



Royal Twill 100/2



Pin Point 120/2



FM41994
1 A

FM41994
15 B

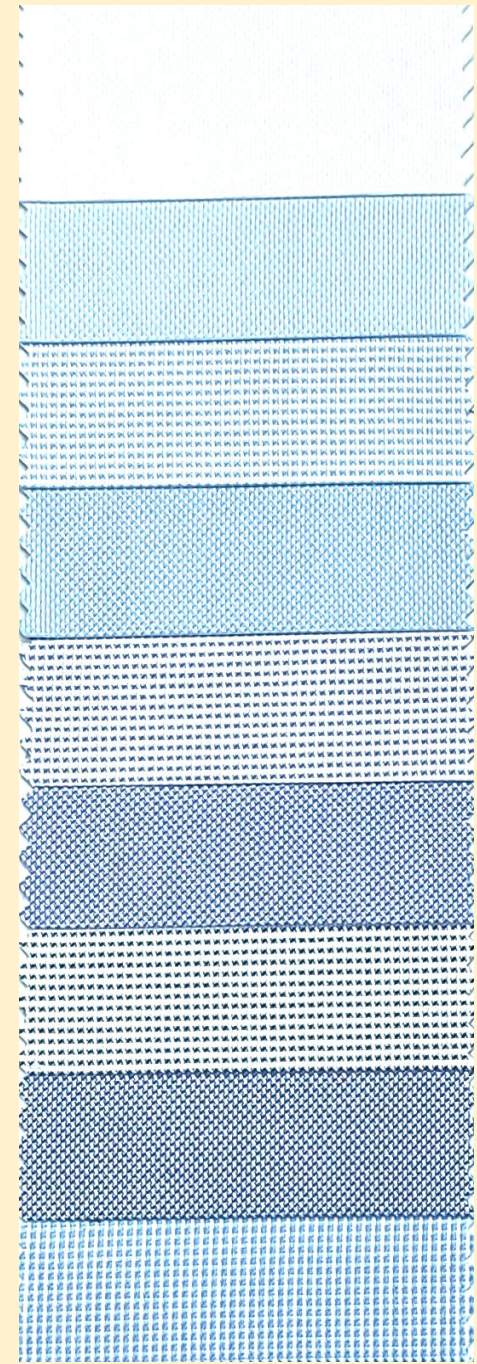
FM41994
81 B

FM41994
13 C

FM41994
31 B

Royal Oxford 100/2
FM36046
191 C

Royal Oxford 100/2
FM36046
48 C



FM33340
1 A

FM33340
10 B

FM17023
13 B

FM33340
12 B

FM17023
17 B

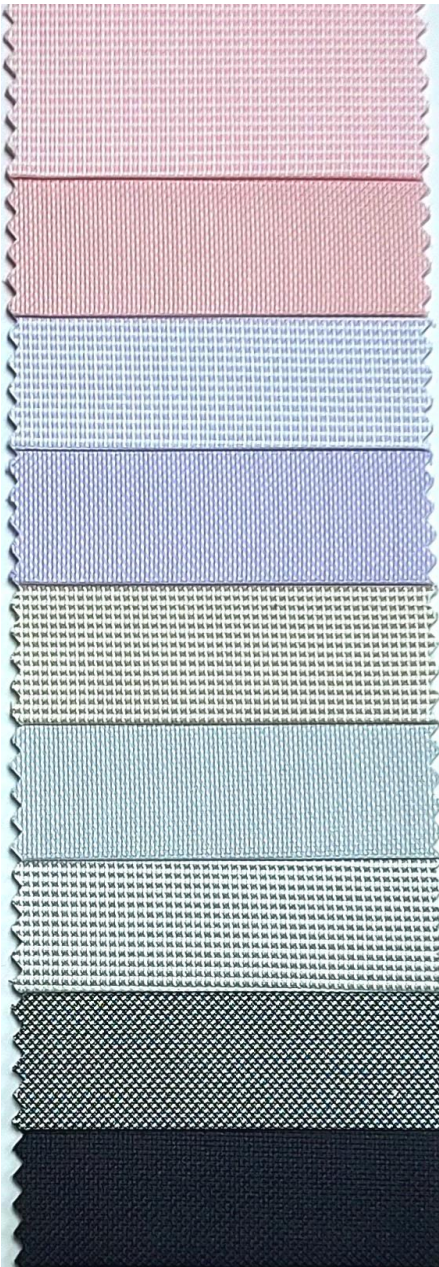
FM33340
17 B

FM17023
18 B

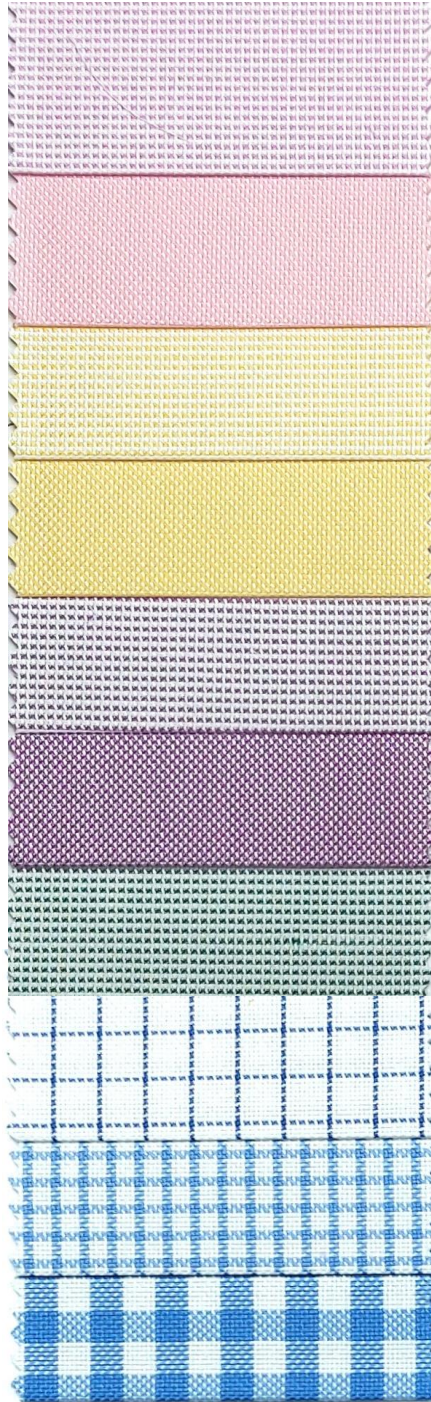
FM33340
19 B

FM17021
13 B

Royal Oxford 100/2

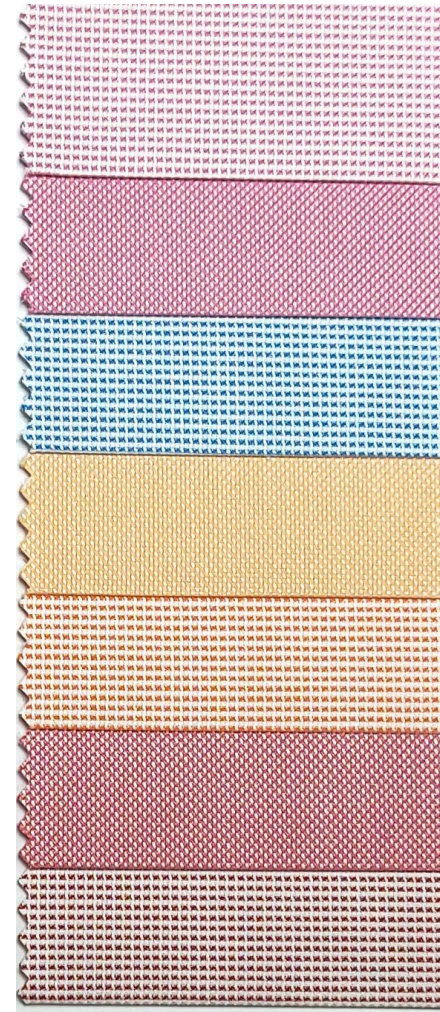


- FM17023
31 B
- FM33340
31 B
- FM17023
83 B
- FM33340
87 B
- FM17023
21 B
- FM33340
438 B
- FM17023
45 B
- FM38127
49 C
- FM36046
49 C



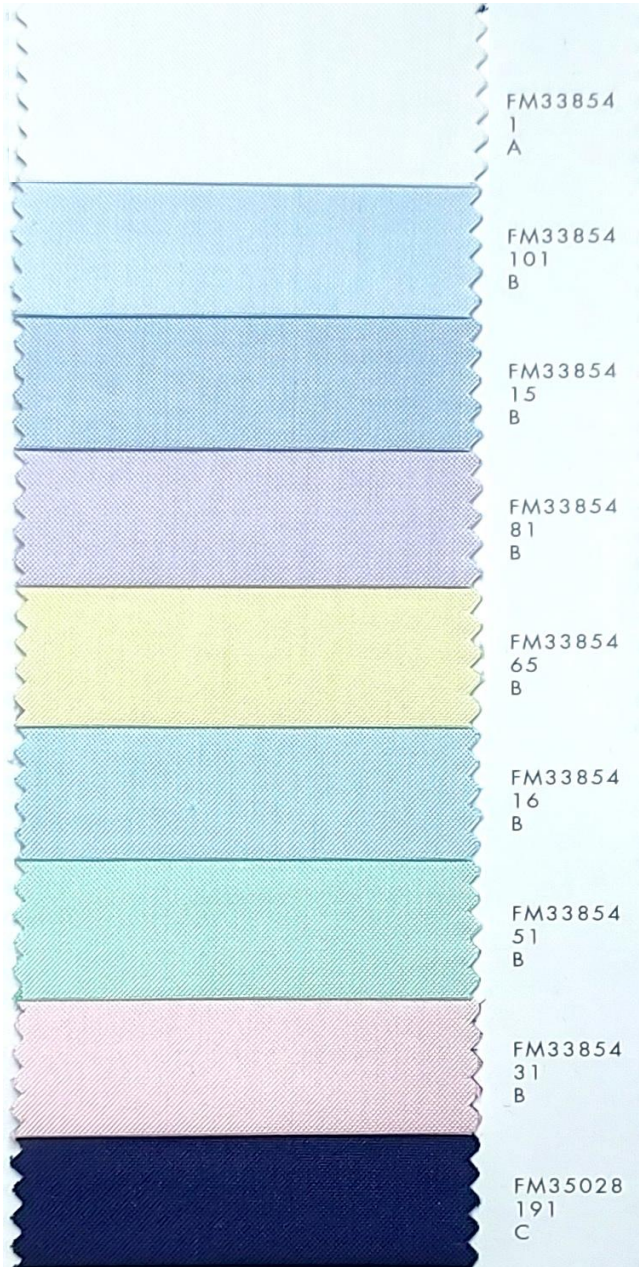
- FM17023
81 B
- FM33340
330 B
- FM17023
65 B
- FM33340
658 B
- FM17023
85 B
- FM33340
83 B
- FM17023
55 B
- FM64228
13 B
- FM18489
14 B
- FM64225
13 B

Royal Oxford 100/2



- FM17023
34 B
- FM33340
36 B
- FM17023
14 B
- FM33340
762 B
- FM17023
71 B
- FM33340
37 B
- FM17023
36 B

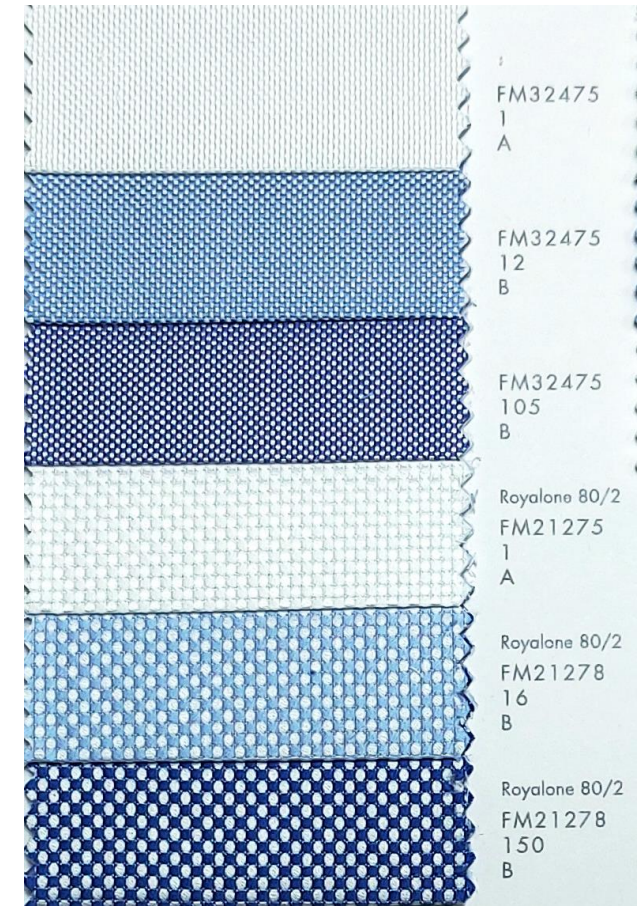
Cambridge 80/2



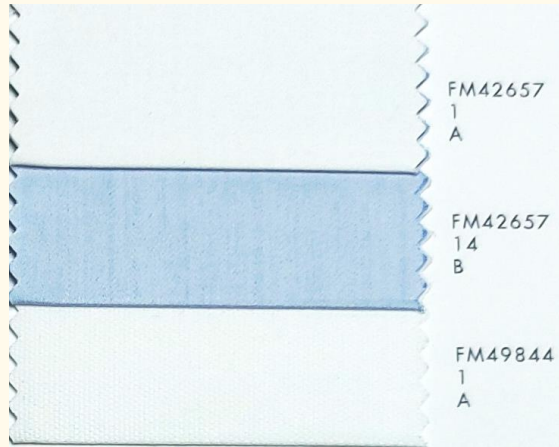
Oxford 75



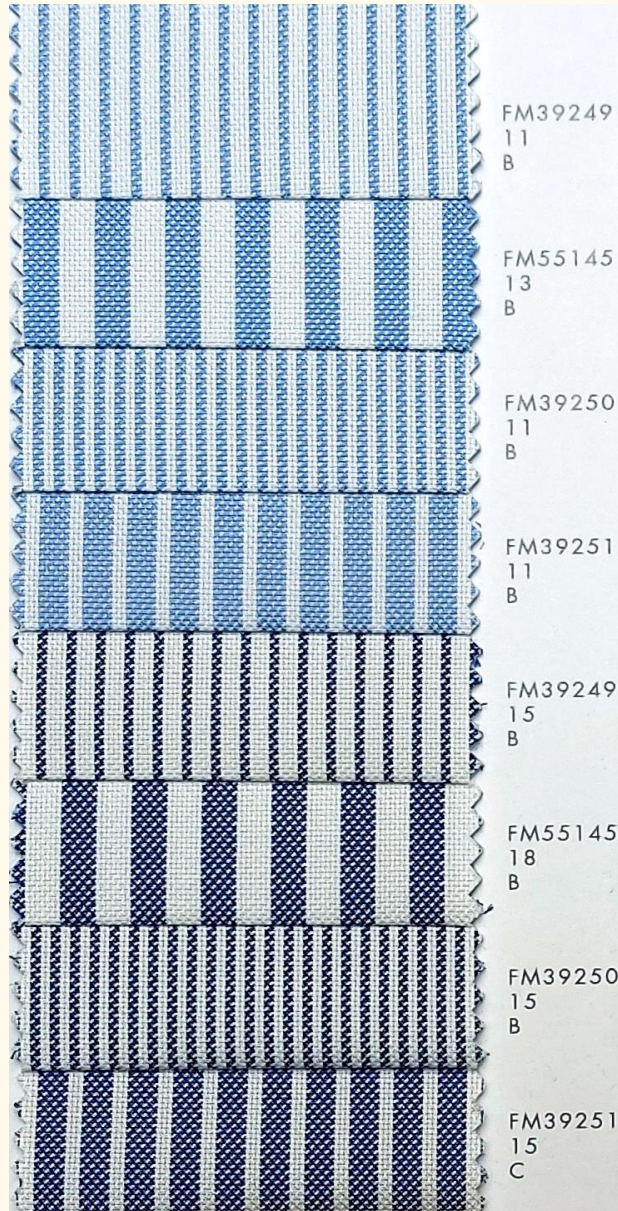
Royale 80/2



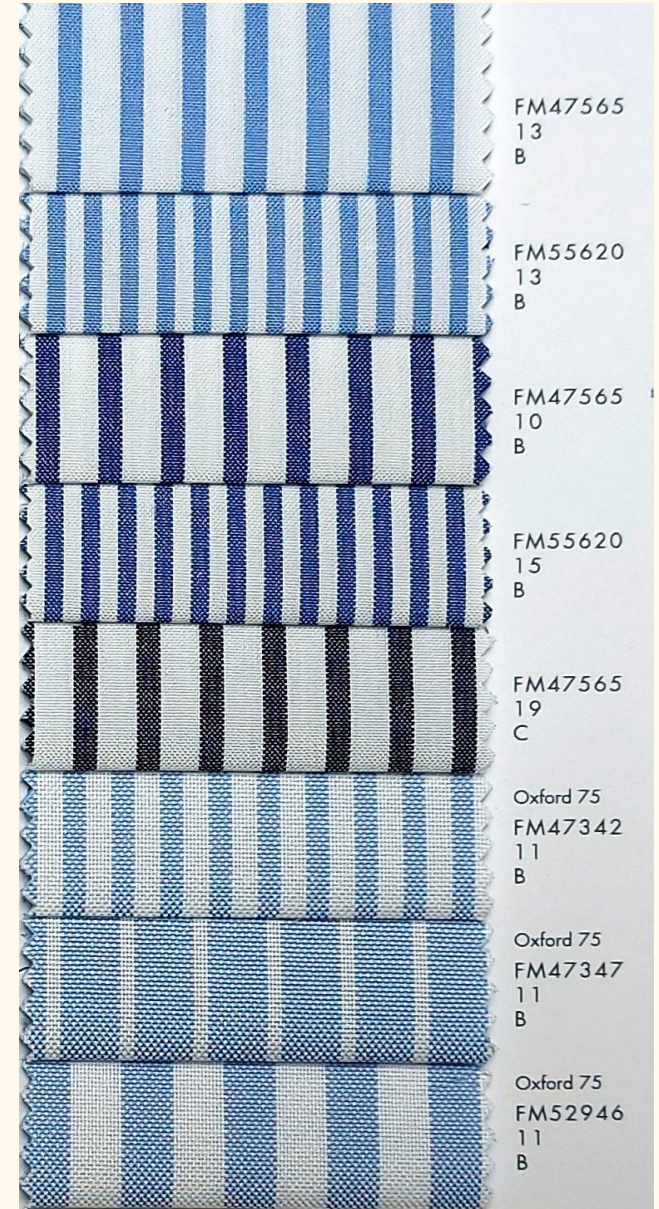
Piquet 70



Royal Oxford 100/2



Cambridge 80/2



Piquet 70



American Oxford



American Oxford



AMERICAN OXFORD

American Oxford is a legendary fabric, that has become a style icon thanks to the great celebrities and actors that have made it famous in the world. Traditionally woven with warp in 40/1 and weft 10/1, it presents a **special and typical irregular construction that enhances its elegance**. Typically used for a button-down shirt, it is ideal for casual chic, unstructured shirts.

*American Oxford è un mito fatto tessuto, un'icona divenuta stile grazie ai grandi personaggi e attori famosi che l'hanno reso celebre nel mondo. Tessuto in maniera tradizionale con ordito in 40/1 e trama 10/1 presenta una **speciale e caratteristica costruzione irregolare che ne esalta l'eleganza**. Tipicamente utilizzato per una camicia button down, è ideale per camicie destrutturate dal gusto casual chic.*